
SiteWatch™

Perimeter Protection by DW®



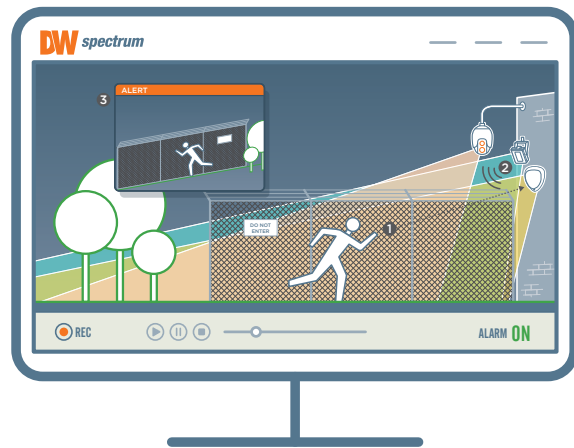
Upgrade your system with motion detection
and external illumination.

Perimeter protection solutions.



SiteWatch perimeter protection products are ideal additions to installations that require external lighting, audio, or motion detection for monitoring or deterrence. All motion detectors, speakers and illuminators are fully integrated with DW Spectrum® and can be controlled and managed remotely from the software.

Key Technologies



Standalone Additions to Any Solution

When the detectors detect motion, the illuminators can be programmed to turn on, and cameras can be activated to record. All devices can be controlled via DW Spectrum®.

SiteWatch™ Illuminating distances

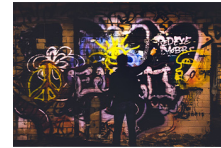
The SiteWatch™ infra-red and white-light illuminators incorporate the latest surface mount Dual-Core™ LEDs, combined with enhanced optical output and outstanding reliability at a variety of distances and wavelengths.

FEET		16	33	69	98	112	118	128	138	141	167	171	180	190	197	216	223	239	256	272	295	308	335	351	374	384	400	420	430	433	476	512	525	548	587	600	613
DW-ILIRIP850 (mounting angle)		95°				80°				60°				30°				20°				10°															
METRES		5	10	21	30	34	36	39	42	43	51	52	55	58	60	66	68	73	78	83	90	94	102	107	114	117	122	128	131	132	145	156	160	167	179	183	187
FEET		7	16	39	59	66	79	85	92	98	112	121	128	131	138	157	161	167	171	184	194	213	223	243	256	259	262	266	279	298	321	344	364	367	377	417	426
DW-ILIRIP940 (mounting angle)		95°				80°				60°				30°				20°				10°															
METRES		2	5	12	18	20	24	26	28	30	34	37	39	40	42	48	49	51	52	56	59	65	68	74	78	79	80	81	85	91	98	105	111	112	115	127	130
FEET		33	66	82	89	95	98	102	112	115	125	131	151	154	157	161	174	177	184	190	213	220	230	243	249	256	262	266	285	305	328	348	361	374	394	410	417
DW-ILWLIPM (mounting angle)		95°				80°				60°				30°				20°				10°															
METRES		10	20	25	27	29	30	31	34	35	38	40	46	47	48	49	53	54	56	58	65	67	70	74	76	78	80	81	87	93	100	106	110	114	120	125	127



SiteWatch™ Speakers

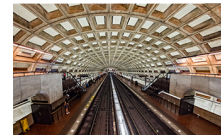
DW's outdoor IP-enabled horn, in-ceiling and wall mounted speakers enable users to respond to events in real-time with automated and manual voice alerts. The horn, in-ceiling and wall mounted speakers enable compatible with VoIP and SIP devices, making it ideal for any new or existing application.



Deterrence



Safety



All-in-One Speaker

DW's all-in-one speakers are designed with powerful amplifiers and signal processing (DSP) to ensure that every voice message is clear and easy to understand. The speaker has an onboard memory that can store prerecorded voice messages, music, and alerts. The DW-SWSP30AM model also includes a built-in microphone, which enables operators to respond to notifications or audio from the field with live communications.

No Noise or Audio Distortion

DW's IP-enabled speakers provide clear and audible speech and audio. They come with a preconfigured, built-in digital signal processor (DSP) that ensures live speech and prerecorded audio can be heard clearly, even from a distance.



Perimeter protection solutions.

Flexible, Scalable, Cost-Effective

DW's speakers are designed to support Power over Ethernet (PoE) for a simplified installation process. With PoE, the speaker can be powered and transmit data through a single cable, making it easy to integrate with your existing surveillance, Voice over IP (VoIP) telephony (via SIP), and event management via DW Spectrum IPVMS. As a standalone product, the speaker can be placed anywhere you need it.



Crime Deterrence

When motion-activated illuminators are part of a complete surveillance solution, potential criminals are less likely to attempt any unlawful activities as they become more easily visible and identifiable.

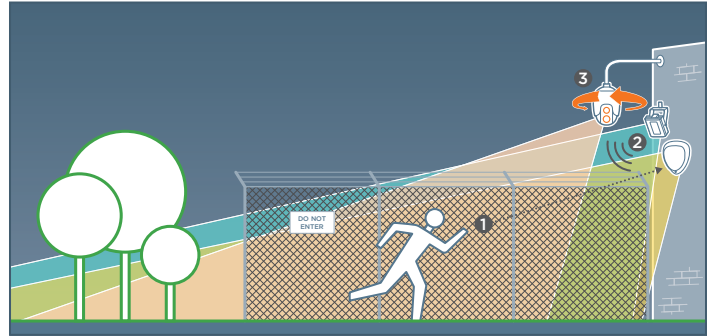
Enhanced details

External illumination facilitates the accuracy and reliability of details captured in an incident, including clear facial imagery, identifying colors and unique markings by ensuring well-lit conditions for identification purposes. The result is actionable footage, reducing investigation time and false identification.



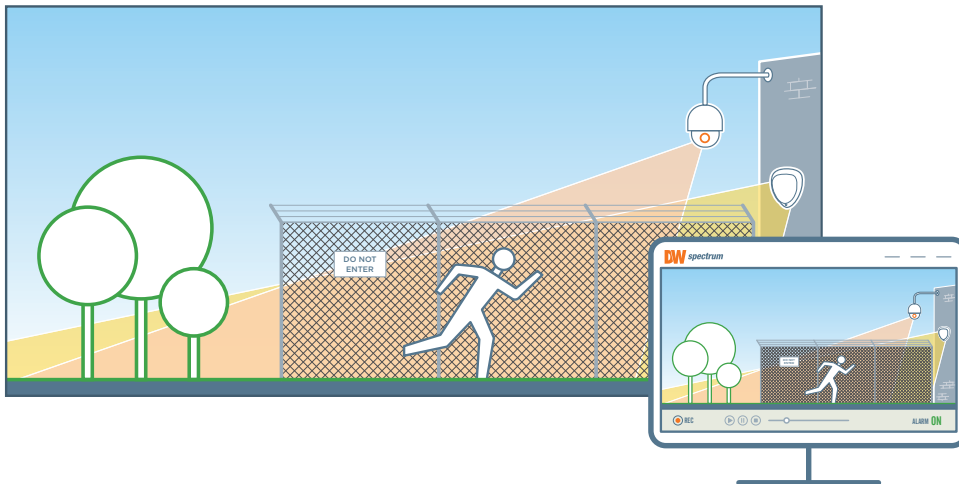
Motion detector and laser sensors for PTZ enhancement

Combine SiteWatch™ motion detectors with a PTZ camera. When motion is detected, the camera can be programmed to move to a specific preset, increasing efficiency and reducing false alarm cases.



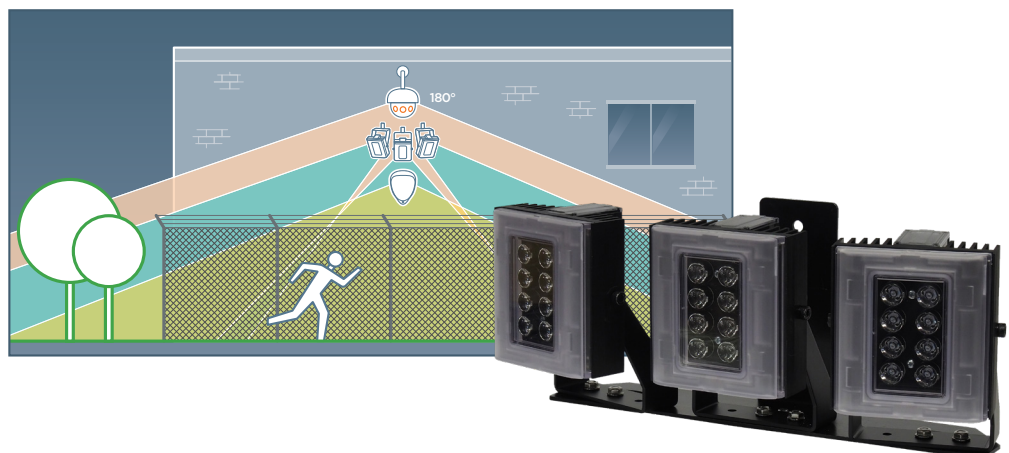
Motion detector and laser sensors for daytime monitoring

SiteWatch™ motion detectors offer a programmable beam range of up to 1640ft (500m), offering truly exceptional resistance to false alarms.



Amplify panoramic surveillance

Combine detectors and illuminators with MEGApix® Pano™ multi-sensor and hemispheric fisheye cameras to create a formidable panoramic solution.



Perimeter protection solutions.

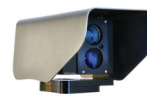
Illuminators



NDAА/TAA
COMPLIANT PRODUCT

SPECIFICATIONS	DW-ILHYBIP850 / DW-ILHYBIP940	DW-ILIRIP850 / DW-ILIRIP940	DW-ILWLIPM
Construction	Robust high-quality aluminum extrusion, black anodized finish		
Photocell	Software adjustable 20 - 70 lux		
Illumination	Software adjustable 10% - 100% with pulse modes		
Operating temperature	-58° to 140°F (-50° to 60°C)	-58°F to 122°F (-50°C to 50°C)	
Mount	Powder coated stainless steel wall mount		
Input	PoE+ (IEEE802.3at)		
Consumption	26W		
IP rating	IP66 environmental-rated dust-tight and water-resistant		
IK rating	IK09 impact-resistant in accordance with IEC/EN 62262	---	---
Electronics	High-efficiency surface mount high power Dual-Core™ LEDs with advanced, current limited, integral control circuitry		
Lumen output	1800 lm	---	2400lm
Color temperature	Ultra white ≈ 6000K	---	5700K (6000K and 6500K options available to order)
Color rendering index	>70	---	Typ. 80
Recommended PSU	Any IEEE 802.3at injector (not included)		
Remote access	Web browser user interface. Full control via DW Spectrum IPVMS		
Wavelength	850nm (DW-ILHYBIP850) 940nm (DW-ILHYBIP850)	850nm (DW-ILHYBIP850) 940nm (DW-ILHYBIP850)	400- 750nm
Coverage distance	614' (187m) (DW-ILHYBIP850) 374' (115m) (DW-ILHYBIP850)	614' (187m) (DW-ILHYBIP850) 374' (115m) (DW-ILHYBIP850)	374' (115m)
Shock sensor and pressure equalization vent	Prevents thermal expansion and pressure cycling	---	---
Warranty	2 year warranty		

Laser sensor



NDAА/TAA
COMPLIANT PRODUCT

SPECIFICATIONS	DW-DTLA500
Field of application	Outdoor surveillance and monitoring
Alarm zones	Up to 20 fully adaptable zones, each zone has individual alarm sensitivity settings and alarm actions.
Alarm actions	Network alarm, relay. Easy direct integration with IP to VMS, enabling PTZ control, automatic video recording and object position.
Self awareness	Adaptive digital processing algorithm suppresses noise from fog and snow, and detects challenging weather to allow alarms to VMS.
Detection range	0 - 1640ft (500m)
Detection resolution	+/- 1 dm
Update rate	250 Hz
Laser wavelength	905nm
Beam divergence	2.0 x 2.0 mRad
Alignment laser	Yes
Laser class	Class 2 laser product, eye-safe
Power supply	Power over Ethernet (48V DC) or 12 V DC
Power consumption	4W (PoE class 2)
Operating temperature	-22°F to +140°F (-30°C to +60°C)
Interface	Ethernet IEEE 802. 3af, TCP/IP, web browser used interface
Relay switch	Max 30V 200mA, NC and NO
Mounting	4 x M5 - Bosch compatible 2.87" x 1.61" (73 x 41mm) 4 x M5 - Axis compatible 1.57" x 2.44" (40 x 62mm) 2 x M6 - common standard 2.87" (73mm C-C) 5/8"-11 UNC (tripod mount)
Enclosure rating	IP66
Color	Shell: gray, sensor: black
Weight	2.4Kg
Warranty	1 year warranty

Motion detectors



NDAА/TAA
COMPLIANT PRODUCT

SPECIFICATIONS	DW-DTMWIPW	DW-DTPWIPW
Detection range	Up to 98.5ft (30m) programmable	
Coverage	10° - 70° detection angle, 98.5ft x 98.5ft (30m x 30m) max.	
Sensing module	Dual-tech: Microwave + quad PIR	Quad PIR
Walk test	Output test mode with LED indication	
Operating temperature	-4°F to 131°F (-20°C to +55°C) conformally coated electronics for increased stability	
Adjustment	180° pan + 90° tilt	
Mounting height	Optimum 9.8ft (3m)	
Indicator LEDs	1 x blue LED on alarm	1 x blue LED on alarm 1 x red PIR detection 1 x green microwave detection
Outputs	Two N/C volt free relay contacts. Web interface set up required.	
Power input	Power over Ethernet (48V DC)	
Power consumption	Max 3.8W, PoE class 1	
Ethernet standard	Ethernet IEEE 802.3af, TCP/IP	
Remote access	Web browser user interface. No software or installation needed	
Microwave frequency	10.525GHz	---
Warranty	2 year warranty	





SPECIFICATIONS	DW-SWSP15A	DW-SWSP30AM	DW-SWSPW30iAM	DW-SWSPC30iAM
Codec	OPUS 48 kHz, MP3 44.1 kHz, G.722 ADPCM 16 kHz, G.711 PCMU 8 kHz, G.711 PCMA 8 kHz			
Built-in microphone	N/A	Yes	Yes	Yes
Max SPL	113dB	120dB	101dB	96dB
Frequency response	300Hz-8KHz	350Hz ~ 8KHz	80Hz ~ 20KHz	100Hz ~ 18KHz
Frequency range	500-2KHZ +-10dB 400-12KHZ +-20dB			
Harmonic distortion	0.1@1kHz			
Signal to noise ratio	91dB			
Amplifier	Built-in 15W amplifier	Built-in 30W amplifier	Built-in 30W Amplifier	Built-in 30W Amplifier
Security	Password protection, IP address filtering, digest authentication, user access log, no firewall			
Network protocol	SIP, ONVIF, HTTP, IPv4, DHCP, RTSP, RTP, RTCP, TCP, UDP, ARP, FTP, TFTP, NFS, NTP			
Network interface	10/100 Base-TX, RJ45			
VoIP	Support SIP protocol for integration with VoIP systems, integrated with SIP/PBX			
Operating temperature	-22°F - 140°F (-30°C - 60°C)			
Operating humidity	5%-85%			
Material	ABS (IP67-rated)		IP55-rated	---
Rate power	15W	30W	30W	30W
Power supply	PoE or 12-24V		PoE or 12V DC	PoE or 12V DC
Installation	Wall-mounted		Wall-mounted	In-Ceiling
Dimensions	8.74" x 7.04" x 9.13" (222 x 179 x 232mm)	11.22" x 8.07" x 11.41" (285 x 205 x 290mm)	7.87" x 3.54"	11.65" x 7.71" x 6.18"
Net weight	2.86 lbs (1.3 kg)	4.4 lbs (2 kg)		
Warranty	2 years			

Motion Detection Accessories:



DW-DTWMDTLA5
Mounting bracket



DW-DTWT
Walk tester



DW-DTCAW
Conduit adaptor



DW-DTPM
Pole mount bracket

Illuminators Accessories:



DW-ILWM1
Mounting bracket for a single (1) illuminator



DW-ILWM2
Mounting bracket for two (2) illuminators



DW-ILWM3
Mounting bracket for three (3) illuminators



DW-ILPM1
Pole mount bracket for a single (1) illuminator

Perimeter protection solutions.

NDAA/TAA Compliance

COMPLIANT PRODUCT

DW® IP cameras, analog cameras, NVRs, DVRs, network devices and management software sold and distributed worldwide are designed and developed in U.S.A. and Korea and manufactured in Korea, Vietnam and Taiwan.

Most DW products qualify for GSA Schedule Contracts and other government opportunities because they are NDAA compliant.



NDAA/TAA
COMPLIANT PRODUCT



Trade
Agreements
Act FAR 52.225-5

Contact us:



California Office
16220 Bloomfield Avenue
Cerritos, California USA 90703
Hours: 8:00am - 5:00pm PST.



Florida Office
5436 West Crenshaw Street
Tampa, Florida USA 33634
Hours: 8:30am - 5:30pm EST.

Phone (Toll-Free).....	1.866.446.3595
Fax.....	1.813.888.9262
Customer Service (U.S.).....	1.866.446.3595
Customer Service (International).....	1.813.888.9555
Customer Service (French).....	1.514.360.1309
Sales Email.....	sales@digital-watchdog.com
Tech Support Email.....	technicalsupport@digital-watchdog.com



866.446.3595

sales@digital-watchdog.com



www.digital-watchdog.com

Built for Users.™

